

## Vegetable Slicer TR260 Vegetable Slicer with flat panel - 1 Speed

ITEM # \_\_\_\_\_  
 MODEL # \_\_\_\_\_  
 NAME # \_\_\_\_\_  
 SIS # \_\_\_\_\_  
 AIA # \_\_\_\_\_



603275 (TR260FIV)

Vegetable Slicer for high productivity, motor unit, ejector included. 1 speed 330 rpm

### Short Form Specification

#### Item No. \_\_\_\_\_

Universal vegetable slicer to serve 300 up to 1000 settings for table service and up to 4000 settings for catering service. 1 speed (330 rpm). 1500W self-braking motor. Stainless steel motor housing and aluminium basement. "No volt release" safety device. Touch button control panel with on/off and pulse function. Cutting disc diam. 300mm. Automatic hopper, lever-operated hopper, long vegetable hopper and cabbage hopper available upon request. The touch button control panel has IP65 protection with low voltage level.

### Main Features

- Vegetable slicer with slicing, grating, shredding (julienne) as well as dicing and French fries cutting capability.
- Continuous feed model.
- "No volt release" safety device.
- Magnetic safety system and motor brake. Prevents machine from running when lever swings away or is open.
- Pulse function for precise cutting.
- Available upon request:
  - Automatic hopper (dia=280 mm), lever-operated hopper, long vegetable hopper (3 tubes) and cabbage hopper.
- Available as option a long vegetable accessory to fit in the lever operated hopper converting it into a long vegetable hopper (3 cylindrical hoppers: 50, 59,5, 70 mm diameter)
- Optional stainless steel mobile stand accessory.
- Complete selection of blades and dicing grids available (diameter 300 mm).
- Suitable for up to 600 meals for table service and up to 2000 meals for catering service.

### Construction

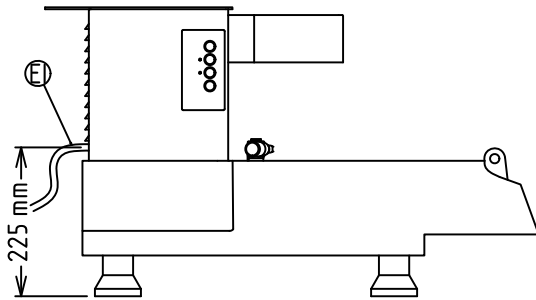
- Stainless steel motor housing with aluminum basement.
- 1 speed: 330 rpm
- Power: 1500 watts.
- Capacity depending on the hopper:
  - lever hopper: 700kg/h
  - automatic hopper: 2500kg/h

APPROVAL: \_\_\_\_\_

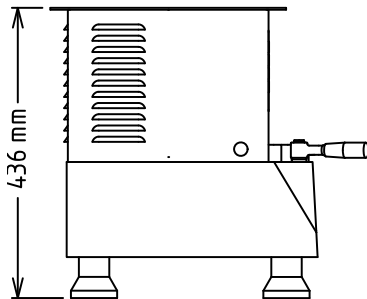
## Vegetable Slicer

### TR260 Vegetable Slicer with flat panel - 1 Speed

Front

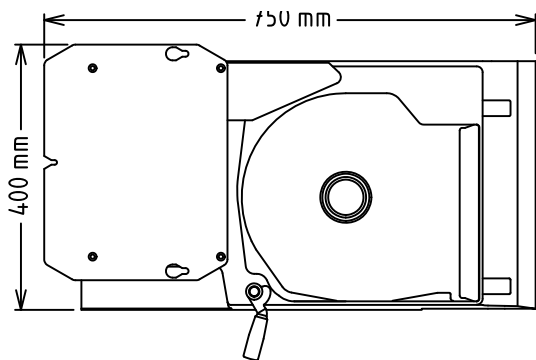


Side



EI = Electrical inlet (power)

Top



#### Electric

Supply voltage:	220-240 V/1N ph/50 Hz
Electrical power max:	1.5 kW
Total Watts:	1.5 kW

#### Capacity:

Performance (up to):	2500 kg/hour
----------------------	--------------

#### Key Information:

External dimensions, Width:	750 mm
External dimensions, Depth:	400 mm
External dimensions, Height:	440 mm
Shipping weight:	60 kg

### Optional Accessories

- |   |            |                          |
|---|------------|--------------------------|
| • Feed tray to be combined with cabbage hopper and long vegetable hopper  | PNC 650036 | <input type="checkbox"/> |
| • Cabbage slicing disc with central shaft for stem removal 1mm (to be used with cabbage feed hopper)                        | PNC 653009 | <input type="checkbox"/> |
| • Stainless steel mobile stand. Height: 730 mm  | PNC 653017 | <input type="checkbox"/> |
| • Lever-operated hopper for TR260 (including feed tray)   | PNC 653036 | <input type="checkbox"/> |
| • Automatic feed hopper for TR260   | PNC 653037 | <input type="checkbox"/> |
| • Large hopper for TR260, diam. 280mm   | PNC 653048 | <input type="checkbox"/> |
| • Dicing grid 10 mm for TR260   | PNC 653051 | <input type="checkbox"/> |
| • Dicing grid 16 mm for TR260   | PNC 653052 | <input type="checkbox"/> |
| • Dicing grid 20 mm for TR260   | PNC 653053 | <input type="checkbox"/> |
| • Dicing grid 25 mm for TR260   | PNC 653054 | <input type="checkbox"/> |
| • Dicing grid 32 mm for TR260   | PNC 653055 | <input type="checkbox"/> |
| • Slicing disc 2 mm (dia. 300 mm)   | PNC 653172 | <input type="checkbox"/> |
| • Slicing disc 3 mm (dia. 300 mm)   | PNC 653173 | <input type="checkbox"/> |
| • Slicing disc 1 mm (dia. 300 mm)   | PNC 653188 | <input type="checkbox"/> |
| • Slicing disc 5 mm (dia. 300 mm)   | PNC 653189 | <input type="checkbox"/> |
| • Slicing disc 6 mm (dia. 300 mm)   | PNC 653190 | <input type="checkbox"/> |
| • Slicing disc 8 mm (dia. 300 mm)   | PNC 653191 | <input type="checkbox"/> |
| • Slicing disc 10 mm (dia. 300 mm)  | PNC 653192 | <input type="checkbox"/> |
| • Slicing disc 16 mm (dia. 300 mm)  | PNC 653193 | <input type="checkbox"/> |
| • Shredding disc 2x2 mm (dia. 300 mm)   | PNC 653195 | <input type="checkbox"/> |
| • Shredding disc 3x3 mm (dia. 300 mm)   | PNC 653196 | <input type="checkbox"/> |
| • Shredding disc 4x4 mm (dia. 300 mm)   | PNC 653197 | <input type="checkbox"/> |
| • Shredding disc 6x6 mm (can also be used for chips - dia. 300 mm)  | PNC 653198 | <input type="checkbox"/> |
| • Shredding disc 8x8 mm (can also be used for chips - dia. 300 mm)  | PNC 653199 | <input type="checkbox"/> |
| • Shredding disc 10x10 mm (can also be used for chips - dia. 300 mm)  | PNC 653200 | <input type="checkbox"/> |
| • Stainless steel disc rack for 300 dia. discs  | PNC 653212 | <input type="checkbox"/> |
| • Disc with corrugated blades 2 mm (dia. 300 mm)  | PNC 653217 | <input type="checkbox"/> |
| • Disc with corrugated blades 3 mm (dia. 300 mm)  | PNC 653218 | <input type="checkbox"/> |
| • Disc with corrugated blades 6 mm (dia. 300 mm)  | PNC 653219 | <input type="checkbox"/> |
| • Long vegetable accessory for TR260 lever-operated hopper (to change the lever-operated hopper into long vegetable hopper) | PNC 653223 | <input type="checkbox"/> |
| • Stainless steel trolley suitable to hold one 2/1 GN container (GN container not included)                                 | PNC 653224 | <input type="checkbox"/> |
| • Cabbage slicing disc with central shaft for stem removal 2 mm (to be used with cabbage feed hopper)                       | PNC 653227 | <input type="checkbox"/> |
| • Cabbage slicing disc with central shaft for stem removal 3 mm (to be used with cabbage feed hopper)                       | PNC 653228 | <input type="checkbox"/> |
| • Dicing grid 12 mm for TR260   | PNC 653301 | <input type="checkbox"/> |
| • Long vegetable hopper with 3 tubes diam. 50 to 70 mm for TR260  | PNC 653306 | <input type="checkbox"/> |